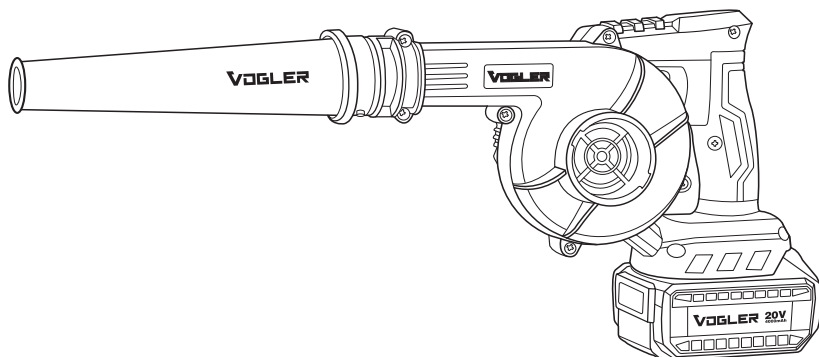


# **VOGLER®**

**TOOLS, WORK, INTEGRITY**

## **V10472**



**CORDLESS BLOWER 20V**



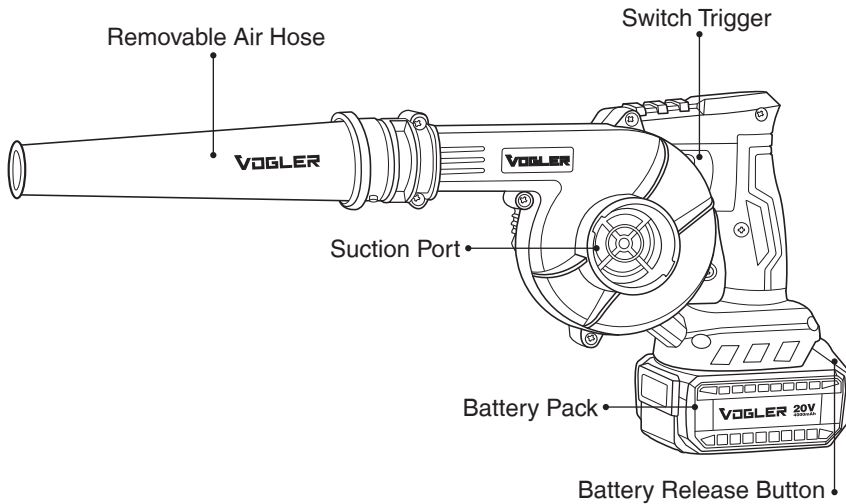
## TECHNICAL SPECIFICATIONS

<b>Model</b>	<b>V10472</b>
<b>Battery Voltage</b>	DC-20V
<b>Battery Type</b>	Li-ion
<b>Battery Capacity</b>	4.0Ah
<b>No Loads of Speed</b>	0-18000RPM
<b>Maximum Air Flow</b>	0-2.8 m³/min
<b>Charging Time</b>	60min
<b>Weight</b>	1.87Kg
<b>Accessories</b>	Blow rubber tube, Dust bag, 1pc 4Ah Battery, 1pc 4A Charger

## **⚠ WARNING**

Read this manual and general safety instructions carefully before using the appliance, for your own safety. Your power tool should only be passed on together with these instructions.

## **PART LIST**



## **GENERAL SAFETY RULES**

Read all safety warnings and all instructions. Failure to follow all warnings and instructions may result in cordless shock, fire and/ or serious injury. Save all warnings and instructions for future reference. The term “power tool” in the warnings refers to your mains-operated (corded) power tool or battery-operated (cordless) power tool.

### **WORKPLACE SAFETY**

- Keep the workplace clean and well-lit. Working in disorganized and dark places can cause accidents.
- Do not operate cordless tools in explosive atmospheres, such as near flammable liquid, gas, or dust as the sparks they generate can ignite

dust or gas.

- Keep the cordless tools away from children and bystanders during the operation. Being distracted, you might end up losing control of the tool.

## **ELECTRICAL SAFETY**

- Avoid human contact with grounding surfaces, such as pipes, cooling fins, and refrigerators. If you touch the ground surface, you will increase the risk of electric shock.
- Do not expose cordless tools to rain or damp environments. Water entering cordless tools will increase the risk of electric shock.
- If it is impossible to avoid operating your cordless tools in a humid environment, use a residual current device (RCD) for protection. Using an RCD can reduce the risk of electric shock.
- Cordless tools will produce electromagnetic fields (EMF) that are harmless to users. However, users of pacemakers and other similar medical devices should consult the manufacturer and/or doctor of their devices for advice before operating this cordless tool.

## **PERSONAL SAFETY**

- Stay alert and focused when working with cordless tools. Do not operate these tools when feeling tired or under the influence of drugs, alcohol, or medications. A moment of distraction or lack of attention can lead to serious injuries to the operator.
- Using personal protective equipment is a **MUST**. Always wear safety glasses. Using dust masks, anti-slip safety shoes, safety helmets, hearing protection, and other PPEs based on necessity in different conditions, can reduce the risk of personal injury.
- Prevent accidental starting. Make sure the switch is off before connecting the tool to the battery pack, picking it up, or carrying it around. Putting your fingers on the switch while carrying the tool or energizing it when the switch is on, can be dangerous.
- Remove all adjustment keys or wrenches before the cordless tool is

turned on. Wrenches or keys left on rotating parts of the tool can lead to injury.

- Don't stretch your hands too far. Always pay attention to the foothold and body balance. This way you can control the electric tools better in case of an accident.
- Dress appropriately. Do not wear loose clothes or accessories. Keep your hair and clothes away from the moving parts. Loose clothes, accessories, or long hair may get caught in the moving parts.
- If a tool is to be used with chip removal and dust collection equipment, ensure that the equipment is well-connected and properly used. The proper use of dust collection devices can reduce the dangers related to dust.

## **TIPS ON CORDLESS USE AND MAINTENANCE**

- Choose cordless tools according to the purpose. This will enhance your efficiency and safety.
- If the switch doesn't turn the power supply on or off, the cordless tool should not be used. Cordless tools that cannot be controlled by switches, are dangerous and must be repaired.
- Before making any adjustments, replacing accessories, or storing the power tools, you must remove the battery pack (if detachable). This protective safety measure reduces the risk of accidental starting of the cordless tool.
- Store cordless tools out of children's reach and do not allow people unfamiliar with these tools and those who do not understand these instructions, to touch them. Cordless tools are dangerous if used by untrained users.
- Maintain cordless tools and their accessories properly. Check whether the moving parts are in place or stuck, and check the parts for damage and other conditions affecting the operation. If damaged, repair the cordless tool before use. Many accidents are caused by poorly maintained tools.
- Keep the handle and surface dry and clean, free of any grease stain.

In the event of an accident, a slippery handle prevents a secure grip and makes it hard to control the tool.

- Avoid operating this tool while wearing cloth work gloves, as they may become tangled and caught in the moving parts, potentially causing injury to the user.

### **TIPS ON BATTERY OPERATED TOOLS USE AND MAINTENANCE**

- Only use the charger specified by the manufacturer for charging. The charger used for one battery pack may cause fire hazards if used for other packs.
- Only use battery packs specially designed for your tool. Using other battery packs may cause injury and fire hazards.
- When the battery pack is not in use, keep it away from other metal objects, such as paper clips, coins, keys, nails, screws, or other small metal objects, to prevent the negative and positive terminals from connecting and causing a short circuit which may start a fire or cause an explosion.
- If misused, the battery pack may start leaking. Avoid contact with the liquid and if you did by accident, rinse the contaminated skin thoroughly with water. In case of any contact with the eyes, you should also seek medical help immediately. The fluid spilled from the battery may cause irritation or burns.
- Do not use damaged or modified battery packs as they may cause fire, explosion, or injury.
- Do not expose the battery packs to fire or temperatures higher than 130°C as they may explode.
- Follow the charging instructions. Do not charge the battery pack outside the temperature range specified in the manual. Improper charging or charging outside the specified temperature range, may damage the battery and increase the risk of ignition.

## REPAIR

- Leave your tool in the hands of professional maintenance personnel and make sure they replace the faulty parts with identical spare parts. This will ensure the safety of the cordless tool.
- Never repair a damaged battery pack. It can only be repaired by the manufacturer or its authorized service provider.
- Please follow the instructions in this manual, when applying lubricating oil and replacing accessories.

## SAFETY INSTRUCTIONS FOR AIR BLOWERS

- Always use safety goggles, a hard hat, and a respirator when using the blower.
- When using the blower, never point the nozzle at anyone in the vicinity.
- Do not pick up smoldering cigarette ash, freshly cut metal shavings, screws, nails, or similar materials.
- Do not expose the tool to rain and store it indoors.
- Never block the suction and/or outlet of the blower. High engine speed can cause dangerous damage to the fan.
- The blower is not intended for use by children or unattended people without supervision.

## DESCRIPTION OF FUNCTION

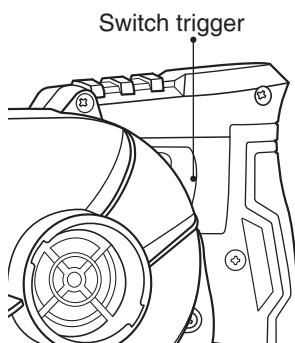
### **WARNING**

Always be sure the tool is switched off before adjusting or checking the operation of the tool.

### **ON/OFF SWITCH**

To start the machine, pull the switch trigger and release it to stop.





## **SPEED CONTROL**

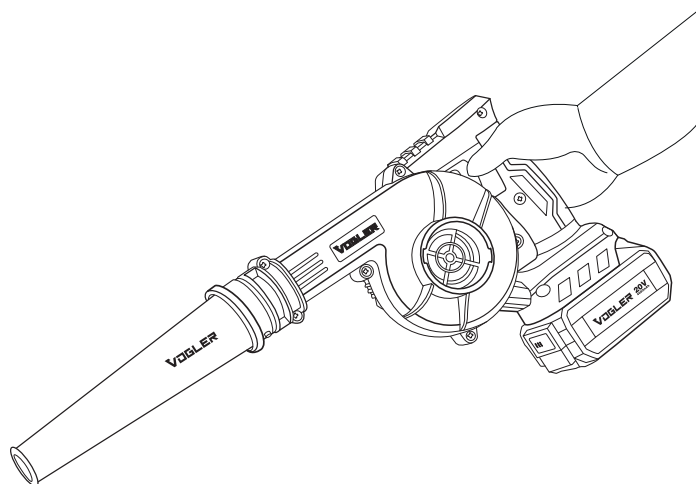
The speed is increased by putting pressure on the switch trigger

## **EXPLOITATION**

### **⚠ WARNING**

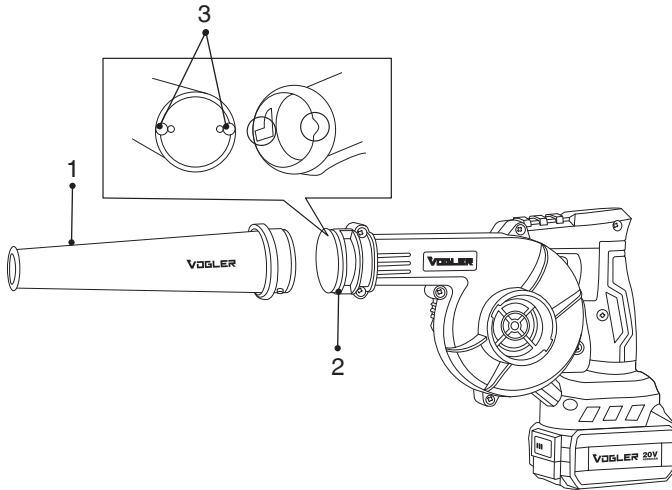
When carrying out work, be sure to hold the tool by the handle. Do not touch metal parts.

Do not use the tool to inflate any objects such as air mattresses, balls, etc.



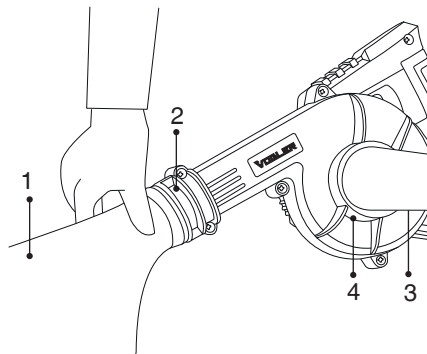
## BLOWER

For purging and installing the branch pipe (1) on the blower outlet (2). Turn it clockwise until it clicks.

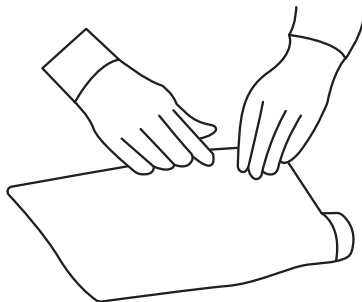


## SUCTION MODE

For suction, place the inlet (3) on the suction port (4) and the dust bag (1) to the blower outlet (2). Turn clockwise until it clicks.



When the bag is full, empty the contents of the dust bag into the trash can.

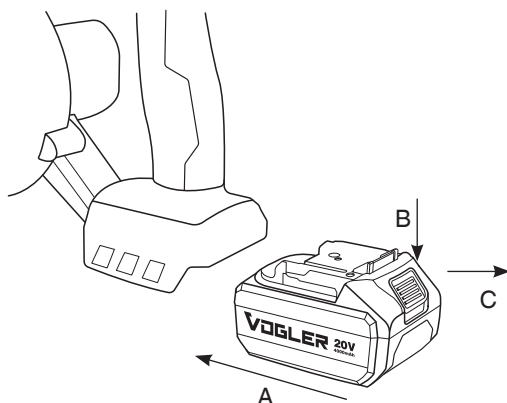


### INSTALL OR RELEASE THE BATTERY

To install the battery, push the battery by arrow(A). You can hear a “click”,

indicating that the battery pack has been installed.

To remove the battery, press the release button by arrow(B) and pull the battery by arrow(C).



## **MAINTENANCE AND SERVICE**

### **TIPS ON MAINTENANCE AND CLEANING**

Make sure the tool is switched off before checking or maintaining it. Every time after finishing work, it is recommended to clean the body of the instrument and the ventilation openings from dirt and dust with a soft cloth or napkin.

It is recommended to remove stubborn dirt with a soft cloth dampened with soapy water.

It is unacceptable to use solvents such as gasoline, alcohol, ammonia solutions, etc., to eliminate contamination. The use of solvents can damage the body of the instrument.

The tool does not require additional lubrication.

### **STORAGE AND TRANSPORTATION**

Store the instrument in closed rooms with natural ventilation in packaging at an air temperature of 0°C to + 50°C and an air humidity of no more than 80%. Products can be transported by any type of closed transport in the manufacturer's packaging or without it while preserving the product from mechanical damage, and atmospheric precipitation. Remove the battery and replacement tool from the packaging before transporting it.

### **SERVICE AND MAINTENANCE**

- Get your power tool serviced regularly by a qualified repair person using only identical replacement parts. This will help maintain the safety and performance of your power tool.
- Follow instructions for lubricating and changing accessories.
- Keep handles dry, clean, and free from oil and grease.

## **CAUTION**

### **FOR YOUR SAFETY**

Always ensure the tool is switched off, unplugged, and the battery cartridge is removed before attempting to perform an inspection or maintenance.

### **MAINTAIN AIRFLOW**

Regularly clean the tool's air vents to prevent overheating and ensure optimal performance. Clean them more frequently if working in dusty environments.

### **CLEANING**

Never use gasoline, benzene, thinner, alcohol, or the like. Discoloration, deformation, or cracks may result.

### **PROFESSIONAL MAINTENANCE**

For optimal safety and reliability, we recommend that repairs, and any other maintenance tasks beyond the user capabilities be performed by an Authorized VOGLER Service Center using genuine VOGLER replacement parts.

### **ENVIRONMENTAL PROTECTION**

This electronic device contains components that require special disposal. To protect resources and the environment, please do not throw it away with regular household garbage. Recycle this product through your local electronics recycling program. If you have any questions, you can also contact your local waste management office or a certified electronics recycler.



**Vogler Tools**

Blindeisenweg 37

41468 Neuss

Tel: +49 2131 2048971



[www.voglertools.de](http://www.voglertools.de)



[@voglertools](https://www.instagram.com/voglertools)



[Vogler Tools](https://www.facebook.com/VoglerTools)