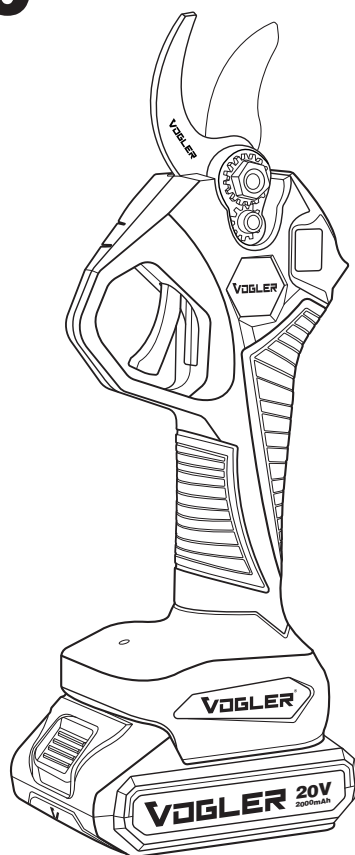


# VOGLER<sup>®</sup>

TOOLS, WORK, INTEGRITY

## V10380



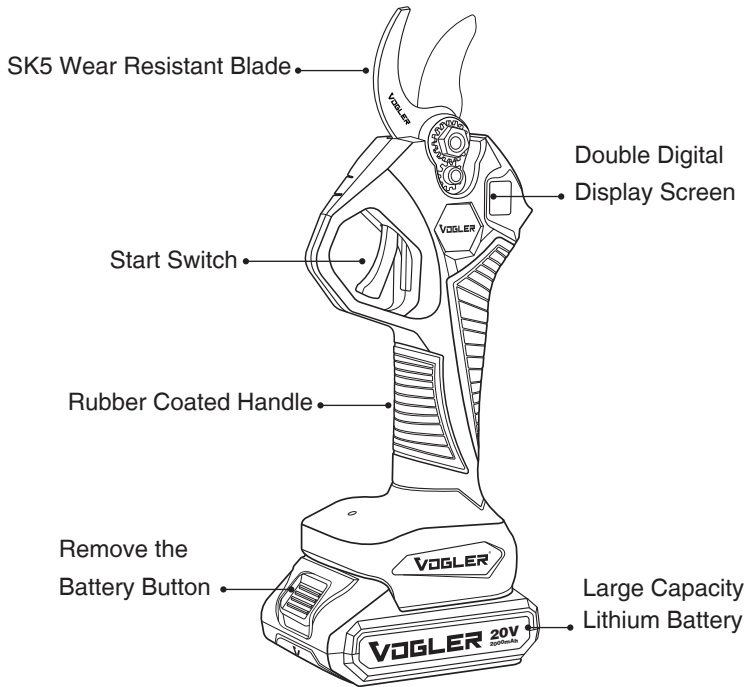
**BRUSHLESS CORDLESS PRUNER 28mm 20V**



## TECHNISCHE SPEZIFIKATIONEN

<b>Model</b>	<b>V10380</b>
<b>Motor Type</b>	Brushless Motor
<b>Battery Capacity</b>	2000mAh
<b>Max Cutting Diameter</b>	28mm
<b>Power</b>	600W
<b>Handle Material</b>	Nylon
<b>Material of Blade and Jaw</b>	Sk5
<b>Body Material</b>	Nylon
<b>Voltage</b>	20V
<b>Battery Type</b>	Lithium-ion
<b>Weight</b>	1.15Kg
<b>Supplied in</b>	BMC
<b>Includes</b>	2 pcs Battery 1 pc Charger 1 pc Oil Bottle 2 pcs Wrench 1 pc Whetstone

## PARTS LIST



Please read the user manual and safety rules carefully before use.

## MAIN SAFETY INSTRUCTIONS

The instructions in this safety manual provide important information for the safe use of products. Failure to follow these instructions will cause serious injuries and large-scale property losses.

- When replacing parts, please use genuine original parts of our factory or good parts in the market.
- When charging, ensure the voltage of the power supply matches that indicated on the signboard. If the power supply voltage is higher than the charger's applicable voltage, it can easily damage the charger and cause accidents.
- Keep in a clean, dry, and ventilated environment with a temperature of 10°C -40°C and a relative humidity of not more than 75%. Avoid contact with corrosive substances. Keep the battery pack away from rain, and do not expose it to fire or heat sources.
- The product must be charged using a matching special charger.
- When the charging indicator bar on the charger stops rolling, promptly remove the charging plug to avoid overcharging the battery.
- The probability of lithium battery overheating, explosion, and fire is much higher than other types of batteries. In addition, when charging, there should be no inflammable and explosive materials attached to the battery or charger, such as newspaper paper, magazines, oil, etc.
- The product has an overcurrent protection function. When the current of the cordless equipment exceeds the product's maximum output power, the overcurrent protection circuit activates, causing the equipment to appear as if it is not functioning properly.
- The Lithium battery is a consumable part with a limited lifespan. It can typically be charged and discharged between 300 and 500 times before it needs to be replaced. Therefore, mastering the correct use method is the secret to prolonging the batteries' life. With the same charging requirements, lithium batteries are prone to heat and high-temperature problems during charging. Please use the batteries attached.
- Avoid long-term uninterrupted charging and use chargers that do

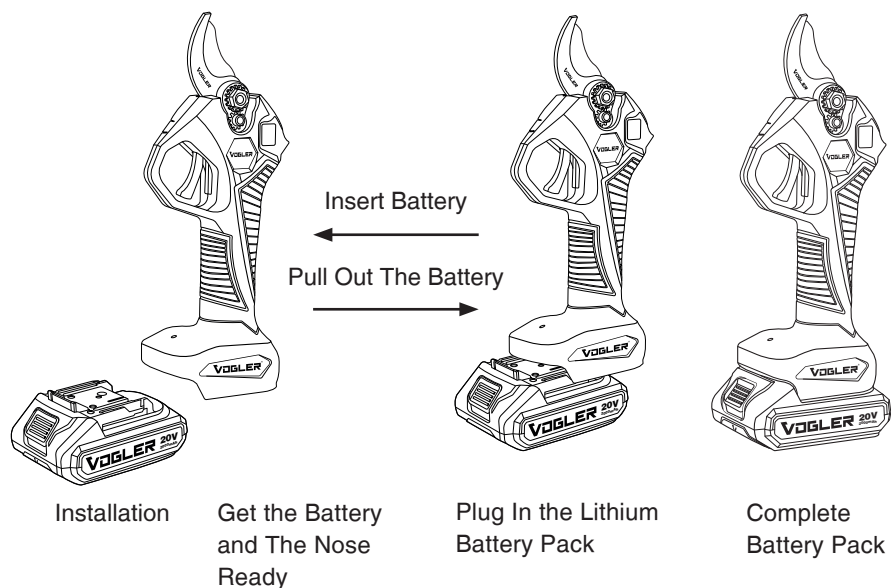
not meet the requirements (especially low-grade chargers without protection functions) to prevent damage or danger. The correct approach is to use qualified or original chargers.

- Charge the device until it reaches full capacity, then disconnect it. Generally, lithium batteries have relatively complete protection functions (including a protective plate). While there are not many other requirements when charging the battery, it is important to prevent overcharging to protect the protective plate.

** DANGER!**

Storing the battery for long periods can cause it to discharge more quickly and lead to the passivation of its active materials. The ideal storage conditions are an ambient temperature of 10°C to 30°C and a humidity level of 65% ± 20%. These conditions can help reduce the negative effects of long-term storage (such as over one year).

To counteract the negative effects of self-discharge and passivation of active substances, the battery should be charged and discharged once every three months to maintain its original performance.



## INSTRUCTIONS FOR CUTTING BRANCHES

- Please confirm that the battery pack is fully charged before use.
- When the cordless pruner is not in use, please make sure that the power supply of the device is disconnected.
- The battery pack of device must be disconnected during sharpening and blade replacement.
- Make sure the blade is securely tightened before using the device.

## BATTERY INSTALLATION PRECAUTIONS

- When installing or disassembling the battery pack, please hold the tool and the battery pack tightly. Otherwise, they may slip from your hands, damage tools and battery packs, and cause personal injury.
- When disassembling the battery pack, press the button on the front side of the battery pack and pull the battery pack out of the tool.
- When installing the battery pack, align the tongue spring on the battery pack with the groove on the housing, and then push it into place. Ensure the battery pack is fully inserted until it locks securely and you

hear a click.

If properly inserted, it should not be visibly protruding.

The red light on the top of the button indicates that the battery adapter is not locked.

## **NOTE**

Always remember to turn off the tool and remove the battery pack before adjusting or checking its functions.

## **END OF THE OPERATION**

- Hold the trigger for at least 5 seconds, then release it. The blade will close and remain closed.
- Turn off the power supply and take out the battery.
- Sort, clean and pack.

## **MATTERS NEEDING ATTENTION WHEN TURNING ON THE POWER SUPPLY**

- When you turn on the power control switch, the battery indicator turns green.
- Take out the electric pruning shears, turn on the battery power switch, and turn on the buzzer of the control box for the first time. You will hear 2 sounds. Then, continuously pull the trigger twice to enter the activation state.
- Normal shearing: Press the trigger and the blade closes. Release the trigger and the blade opens. blade Close: Press the trigger continuously, and the buzzer will ring for a long time to make the blade close.
- Before working, intermittently press the trigger to close the blade with no load several times, and check whether it is normal.
- Start working after normal.

## FAULT PROMPT

Number of Buzzer Rings	Breakdown	Solution
1	Abnormal Battery Power	Check Whether the Battery Level Is Too Low.
2	Communication Anomaly	Check Whether the Cable Connectors of Each Part are loose.
3	Opening Anomaly	Check the Blade.
4	Motor Phase Deficiency	Send It to The Local Dealer For Maintenance.
5	Motor Phase Line Short Circuit	Check the Cable or Connector for Short Circuit.
<b>Buzzer Rings Continuously</b>	Safety Warning	Check Whether the Body Touches the Blade.

## IMPORTANT NOTES FOR USING SCISSORS

- Don't cut branches beyond the working range of scissors, and don't cut non-plant materials such as metal and stone. Avoid clamping hard objects with a vise. If the blade becomes worn or damaged, replace it promptly.
- Keep the equipment clean. Clean the electric pruning shears, battery packs, and chargers with a clean cloth. (Do not use corrosive or soluble cleaners), use a soft brush or dry cloth to clean the dust on the cutter head.
- Do not soak electric pruning shears, battery packs, and chargers in any liquid such as water.
- If the switch can't turn on or off the cordless pruner shears normally, please don't use them. Cordless pruners controlled by switches are dangerous and must be repaired.
- Always ensure the switch is turned off when making adjustments, changing accessories, or storing cordless pruner. This precautionary measure reduces the risk of accidental activation and enhances safety.

## **IMPORTANT SAFETY PRECAUTIONS FOR BATTERY PACKS**

- Before using the battery pack, please read all instructions carefully, including the battery charger and proper battery usage.
- Do not disassemble the battery pack.
- If the running time of the machine becomes too short, please stop using it immediately, otherwise, it may cause overheating, fire, or even explosion.
- If electrolyte enters your eyes, rinse with clean water immediately and seek medical attention. Failure to do so may result in vision damage.
- Do not short-circuit the battery pack.
- Do not allow any conductive material to contact the terminals.
- Avoid placing the battery pack in the same container as the other metal objects such as nails and coins.
- Do not put the battery pack in water or make it short-circuit in the rain. This will generate a large current and lead to overheating and possible conduction, causing fire or even breakdown.
- Do not place tools and battery packs in places where the temperature may reach or exceed 50°C.
- Don't burn the battery pack even if it is seriously damaged or worn out. The battery pack will explode in the fire.
- Please be careful not to hit or drop the battery.
- Do not use the damaged battery.

## **SERVICE AND MAINTENANCE**

- Get your power tool serviced regularly by a qualified repair person using only identical replacement parts. This will help maintain the safety and performance of your power tool.
- Follow instruction for lubricating and changing accessories.
- Keep handles dry, clean and free from oil and grease.

## CAUTION

### **For your safety**

Always ensure the tool is switched off, unplugged, and the battery cartridge is removed before attempting to perform inspection or maintenance.

### **Maintain airflow**

Regularly clean the tool's air vents to prevent overheating and ensure optimal performance. Clean them more frequently if working in dusty environments.

### **Cleaning**

Never use gasoline, benzine, thinner, alcohol, or the like. Discoloration, deformation, or cracks may result.

### **Professional maintenance**

For optimal safety and reliability, we recommend that repairs, and any other maintenance tasks beyond user capabilities be performed by an Authorized VOGLER Service Center using genuine VOGLER replacement parts.

### **Environmental Protection**

This electronic device contains components that require special disposal. To protect resources and the environment, please do not throw it away with regular household garbage. Recycle this product through your local electronics recycling program.

If you have any questions, you can also contact your local waste management office or a certified electronics recycler.



**Vogler Tools**

Blindeisenweg 37

41468 Neuss

Tel: +49 2131 2048971



[www.voglertools.de](http://www.voglertools.de)



[@voglertools](https://www.instagram.com/voglertools)



[Vogler Tools](https://www.facebook.com/VoglerTools)